

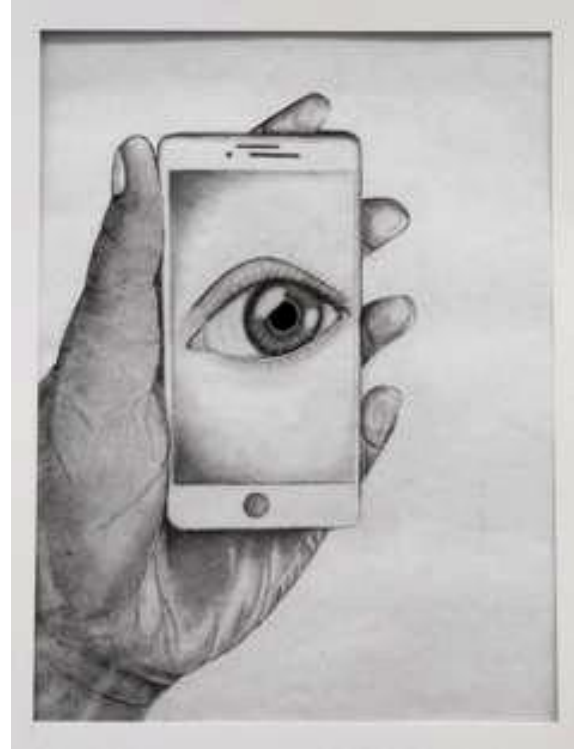
# Value Intro

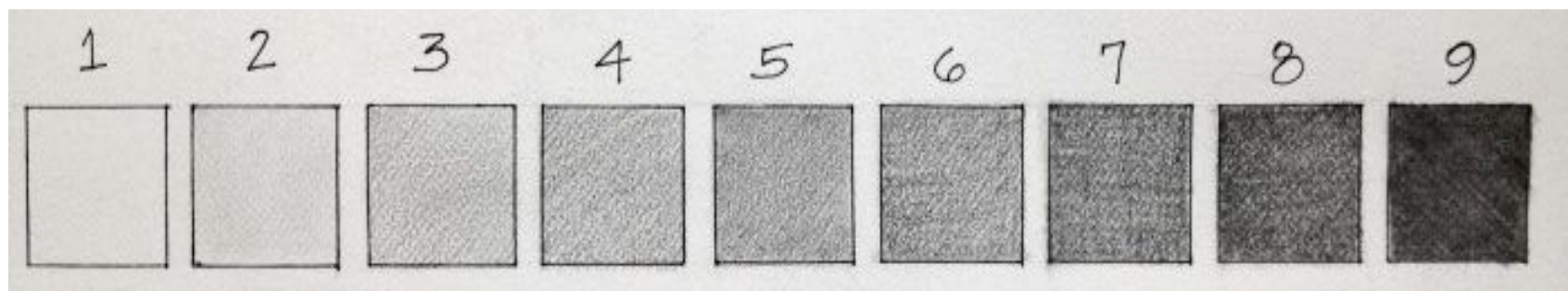
Light vs. Dark

Low Value Contrast

vs.

High Value Contrast





100% black  
8-6B soft pencils - 2B-HB - 4-6H hard pencils

100% white

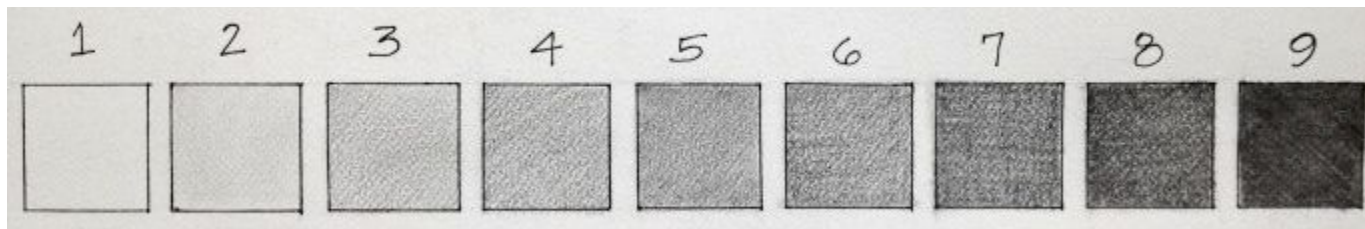
# 7 Step Value Scale + Value Gradient

Trace your ruler twice up to 7 inches long.

Inside the first, make seven one-inch sections inside.

You will make a value scale with consistent steps darker going from white at the right to black (or as dark as possible) on the left.

You do SEVEN boxes, not 9!  
Still make #7 black and #1  
white:



Gradient:



100% black  
8-6B soft pencils - 2B-HB - 4-6H hard pencils  
100% white

# Drawing tips for smooth shading

- Your goal is to have an even tone and NOT see individual pencil strokes or lines
- Draw with your pencil tilted to exert less pressure on the tip when drawing lightly
- Make small overlapping oval motions with your lead as you draw to ensure a smooth, even surface
- At the edge of a shape run your pencil along the edge so that the tone gets right up to the edge but does not go outside the lines
- Push hard for darks! Don't be timid.
- There should be an even value change between blocks on the value scale