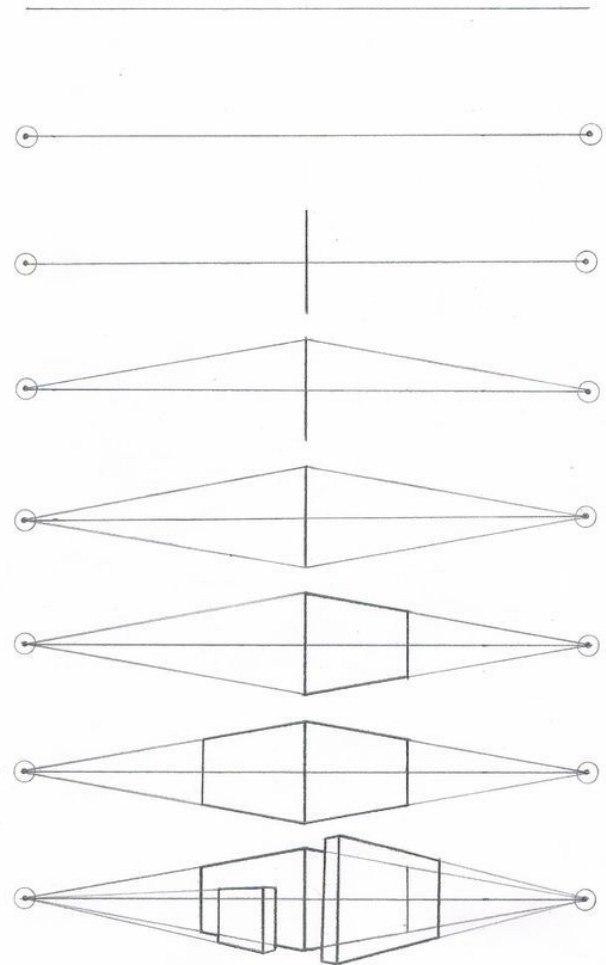


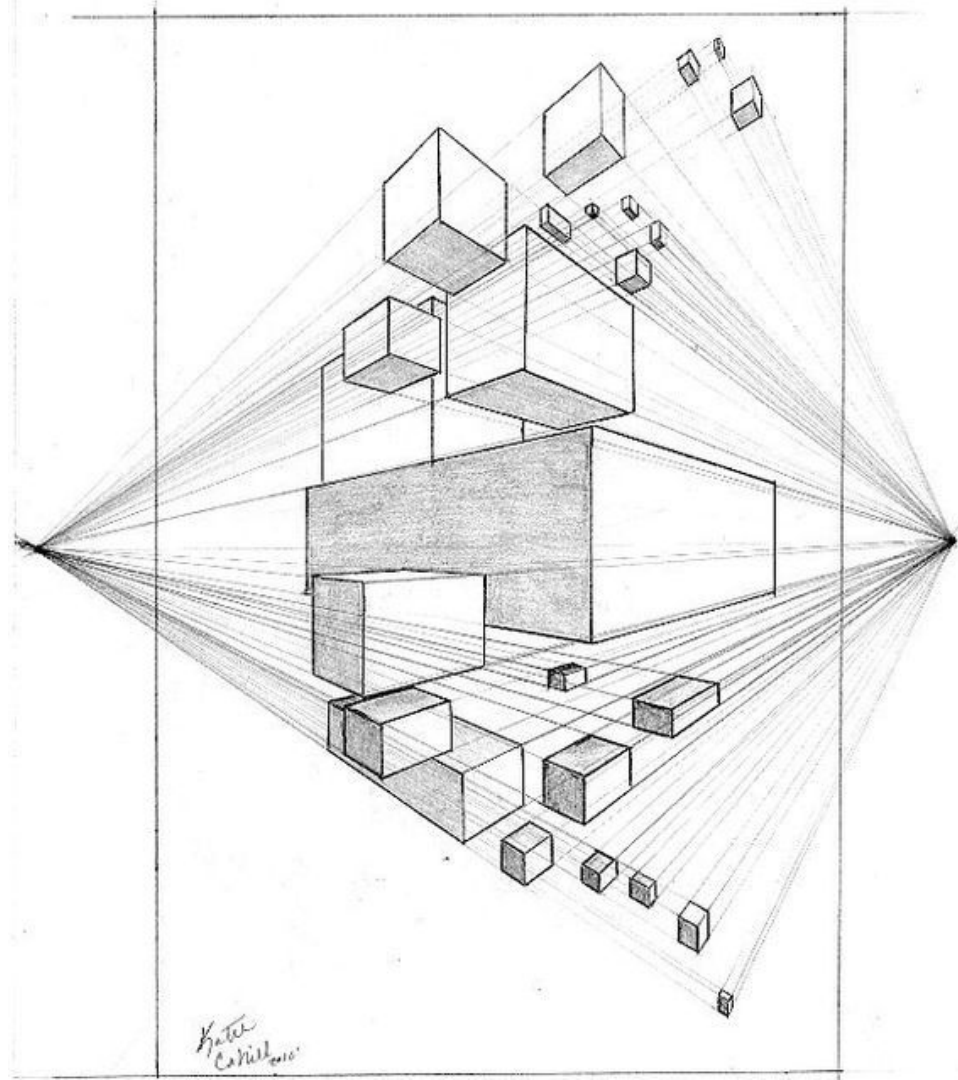
2 Point Perspective

How To

https://youtu.be/ZZuY55mqR_Q



Practice Boxes - x5



Architectural Drawing

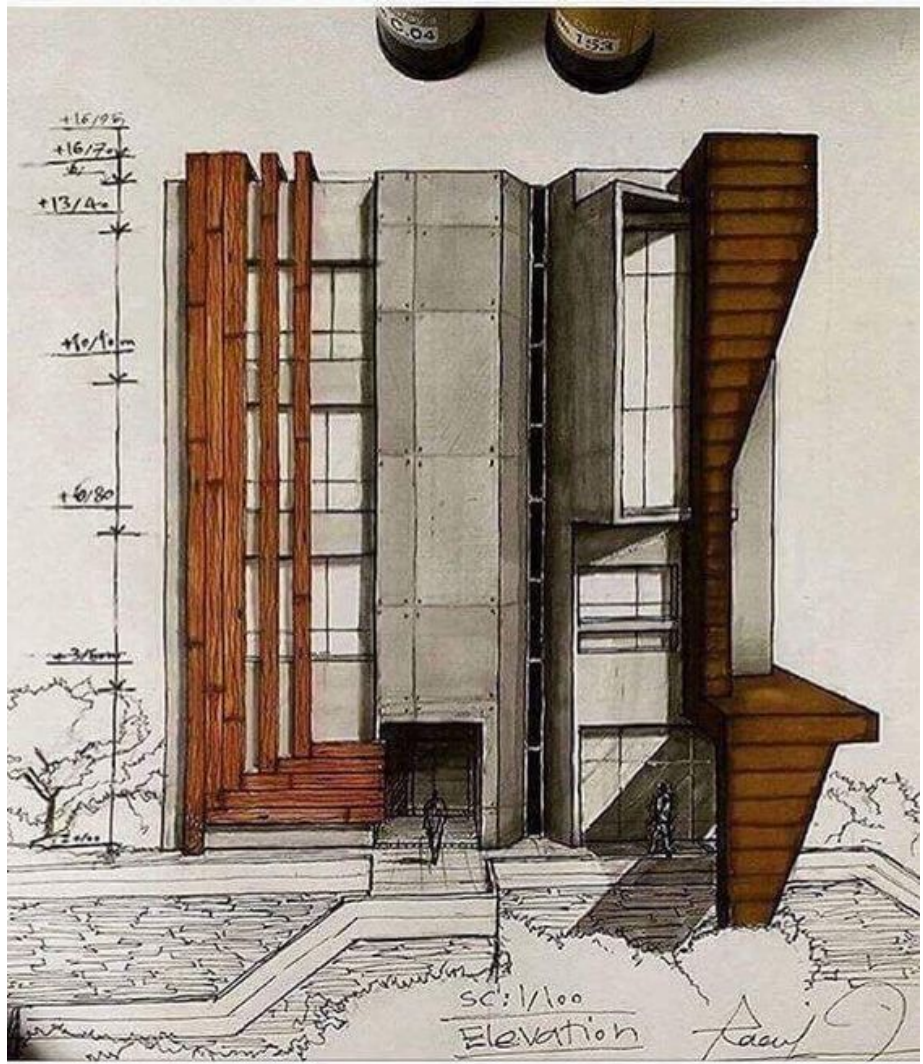
Your modernist home!

Must have: 5 protrusions,
3 different building
surfaces, a porch or deck,
at least 1 door and 4
windows, minimal
landscaping, “creative
extra”

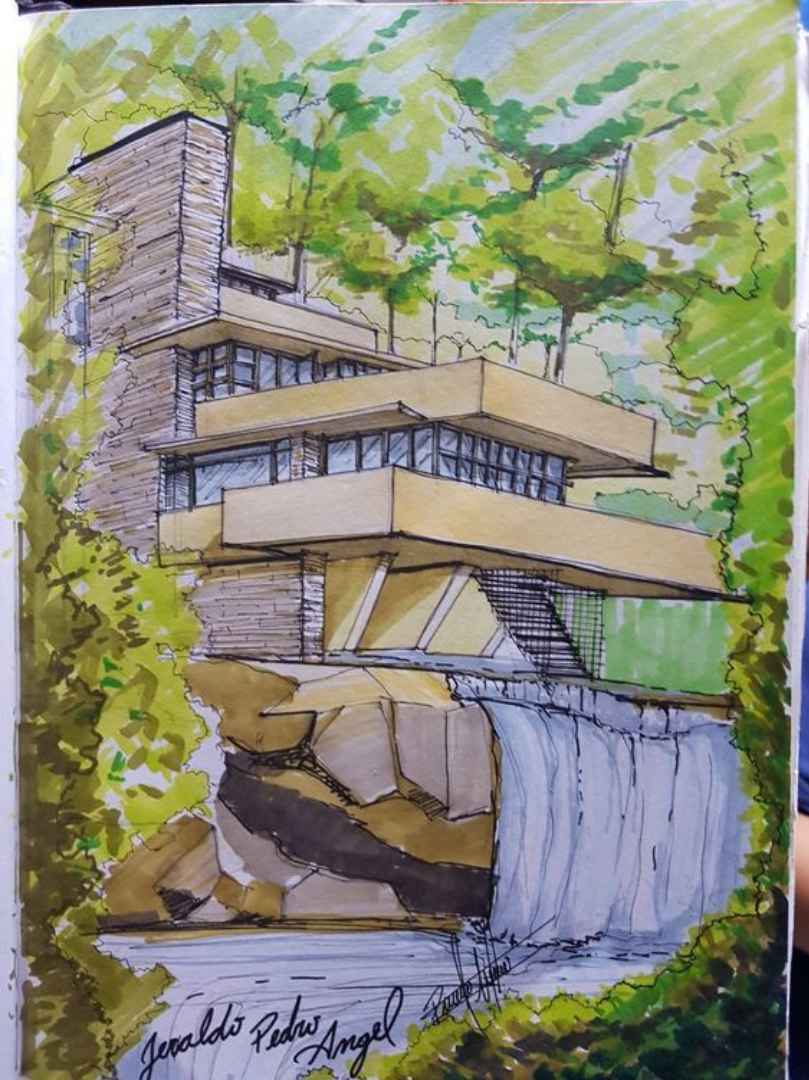
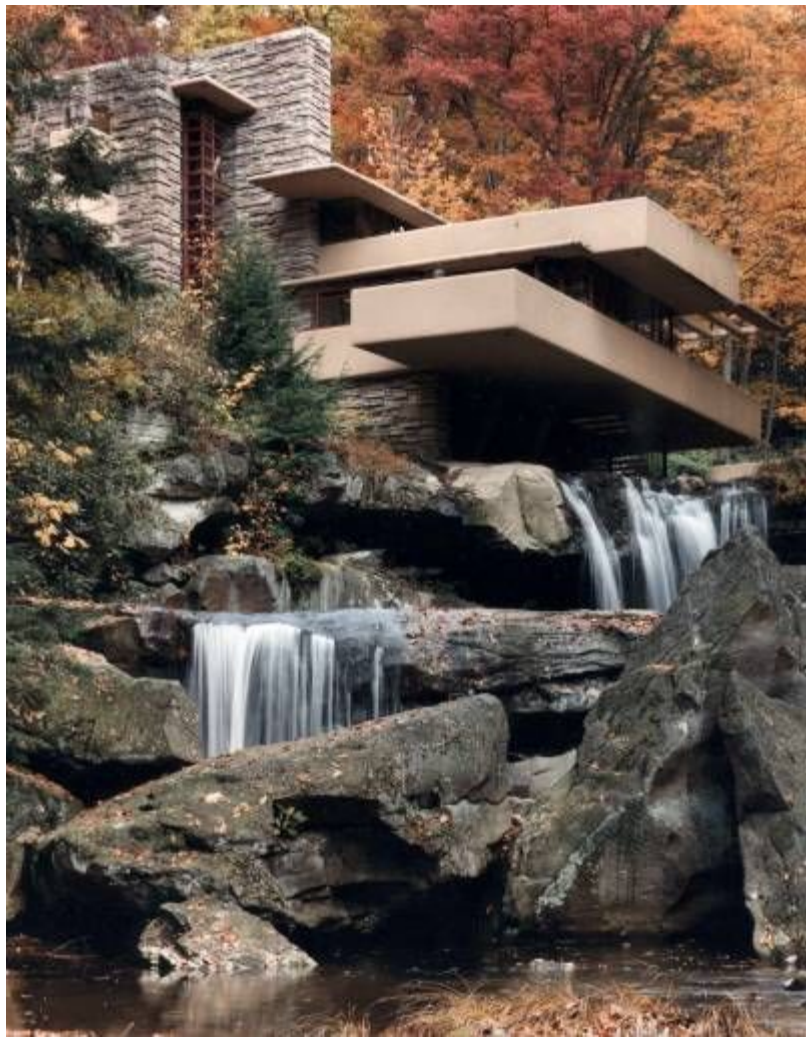
Materials: Sharpie/waterproof black pen
and a colored material (marker, colored
pencil, watercolor)



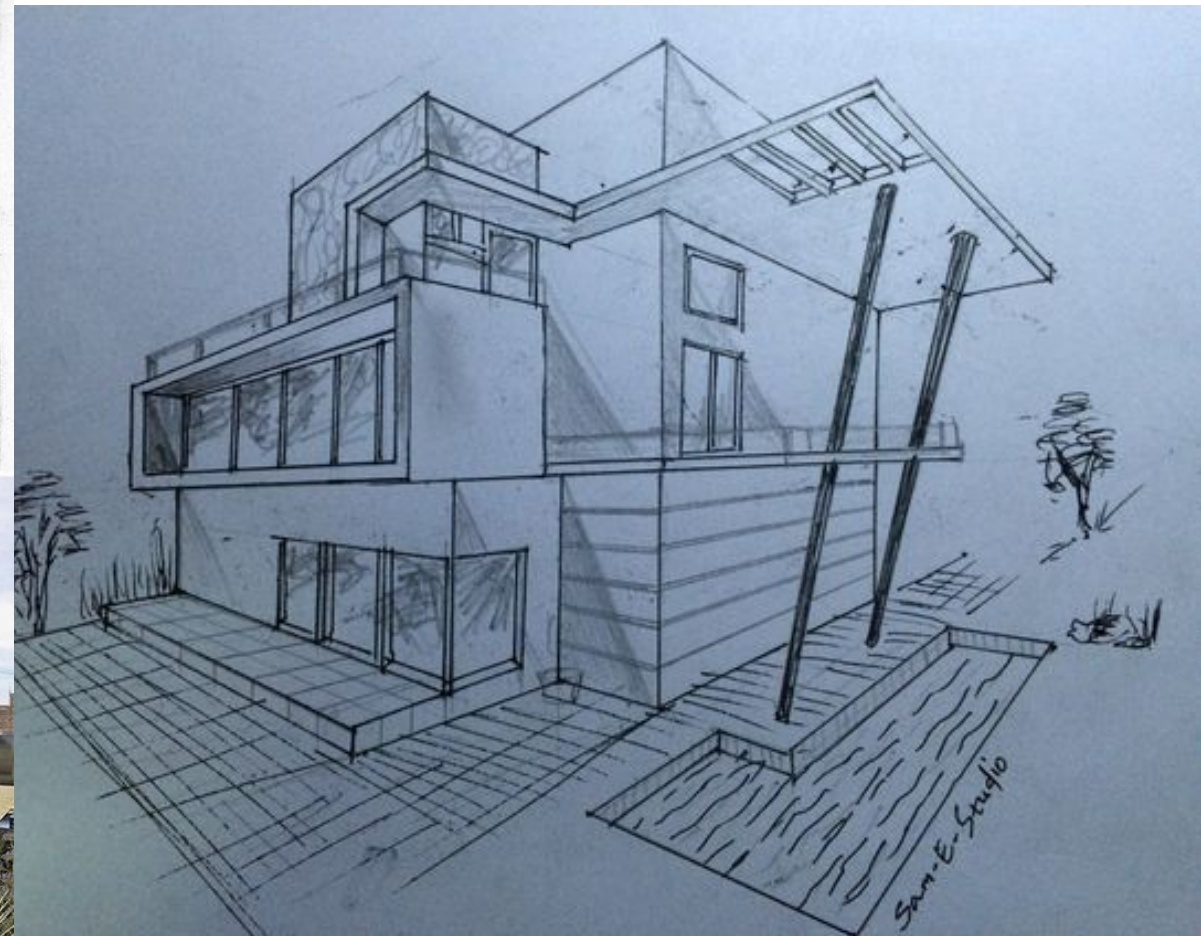
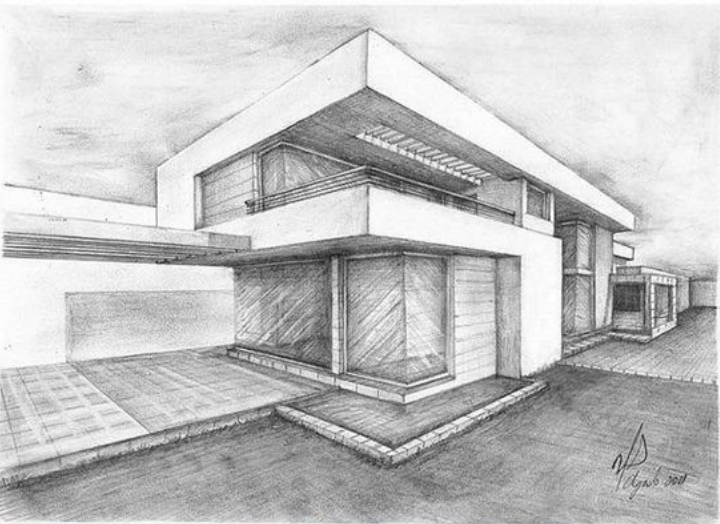
(This is one point perspective,
But a good example of different
Surface textures)







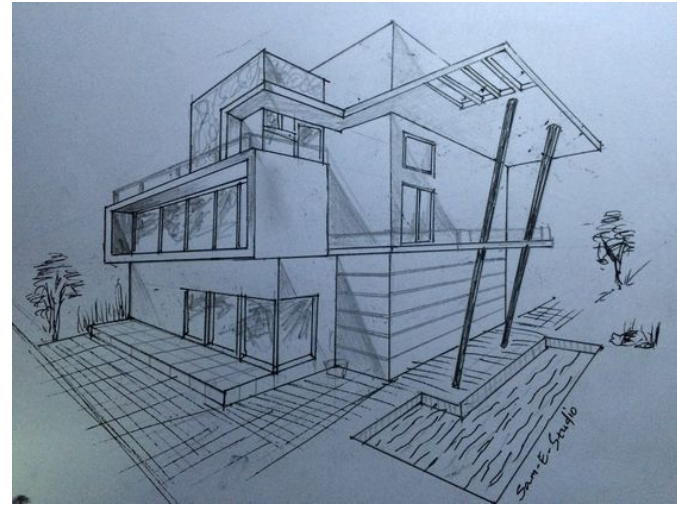








Practice 5 boxes, sketch ideas of modernist house, 3 reference photos found for inspiration (printed & glued in sketchbook)



*Do not copy an existing house or drawing. This should be your unique creation. You may use reference images for ideas and inspiration only.

Rubric

8 points	Planning: Evidence of planning in sketchbook. Practice 5 boxes, sketch ideas of modernist house, 3 reference photos found for inspiration (printed and glued in sketchbook)
10 points	Creating: All requirements met. Must have: 5 protrusions, 3 different building surfaces, a porch or deck, at least 1 door and 4 windows, minimal landscaping, one “creative extra”. Drawing done on at least 12” x 18” on a paper type appropriate to media.
10 points	Execution: Drawing is done in correct 2 point perspective with ALL diagonal lines going towards vanishing points.
8 points	Refinement: Good craftsmanship is used including care of paper surface, no wrinkles or extraneous marks. High level of care and refinement given to drawing, mark-making and coloring. Intentional color palette used.